



Wildlife Photography Challenge

By Christian Sperka

The Nashville Zoo

Nashville, Tennessee , USA





Field Guide

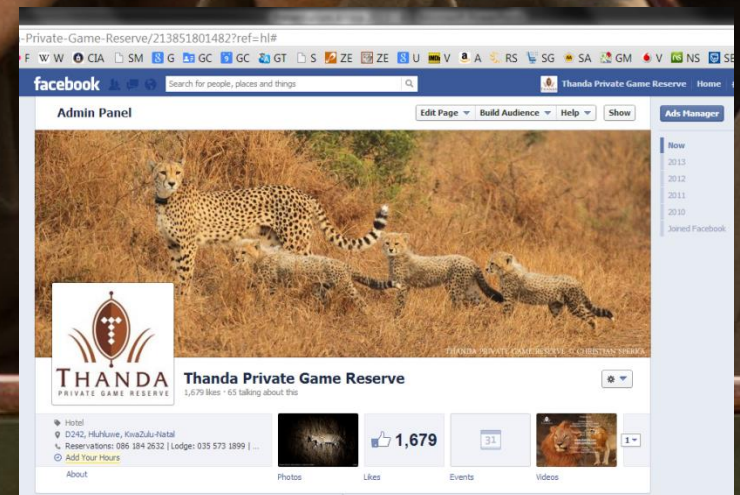


Resident Wildlife Photographer
and Specialist Photography Guide

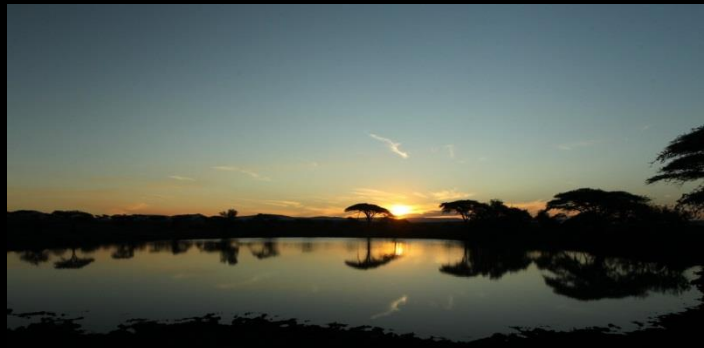




Resident Wildlife Photographer and Specialist Photography Guide



Social Networking



STILL



STILL



HUMAN



STILL



HUMAN



MOTION



STILL



HUMAN



MOTION

Animal photography = motion photography!



Animal photography = keep it simple!



Animal photography = be ready!



Animal photography = be ready!

Camera - Standard Setup

(to be returned to after every change for a specific situation)

Animal photography = be ready!

Camera - Standard Setup

(to be returned to after every change for a specific situation)

Shooting mode: **AV** **A**(P for flash use)

Image recording quality: **JPG best quality** (or RAW)

White balance: **Shade** (outdoors) – AWB (indoors)

Starting ISO: **400** (good weather) – **1600** (bad weather and indoors)

Metering mode: **Center weighted**

Drive mode: **Single shooting**

AF mode: **One shot AF-S** (**AI Servo AF-C** if object is moving towards you or away from you)

AF points: **Center point only**

Animal photography = be ready!

Camera - Standard Setup

(to be returned to after every change for a specific situation)

Shooting mode: **AV** **A**(P for flash use)

Image recording quality: **JPG best quality** (or RAW)

White balance: **Shade** (outdoors) – AWB (indoors)

Starting ISO: **400** (good weather) – **1600** (bad weather and indoors)

Metering mode: **Center weighted**

Drive mode: **Single shooting**

AF mode: **One shot AF-S** (**AI Servo AF-C** if object is moving towards you or away from you)

AF points: **Center point only**

Aperture=fully open - Shutter Speed=Auto

ISO = up and down (to achieve fast enough shutter speed)

Exposure Compensation

Animal photography = be ready!

Camera - Standard Setup

(to be returned to after every change for a specific situation)

Shooting mode: **AV** **A**(P for flash use)

Image recording quality: **JPG best quality** (or RAW)

White balance: **Shade** (outdoors) – AWB (indoors)

Starting ISO: **400** (good weather) – **1600** (bad weather and indoors)

Metering mode: **Center weighted**

Drive mode: **Single shooting**

AF mode: **One shot AF-S** (**AI Servo AF-C** if object is moving towards you or away from you)

AF points: **Center point only**

Aperture=fully open - Shutter Speed=Auto

ISO = up and down (to achieve fast enough shutter speed)

Exposure Compensation



Animal photography = be patient!



Animal photography = be patient!



Animal photography = keep shooting!



What makes a good animal picture?





- Eyes in focus



- On eye level or below



- Away from fences front and back



- Motion

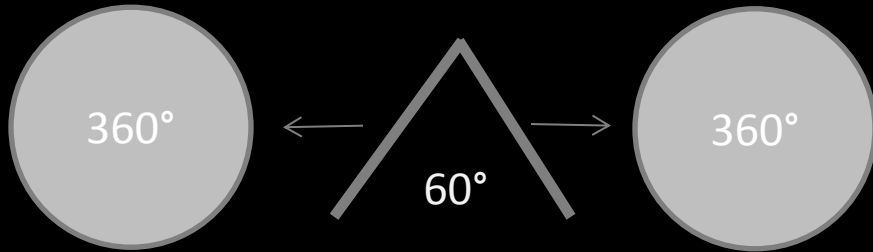


- Tension



Sunrise + 1h

Sunset - 1h



SUN
FROM THE
BACK



Sunrise + 1h

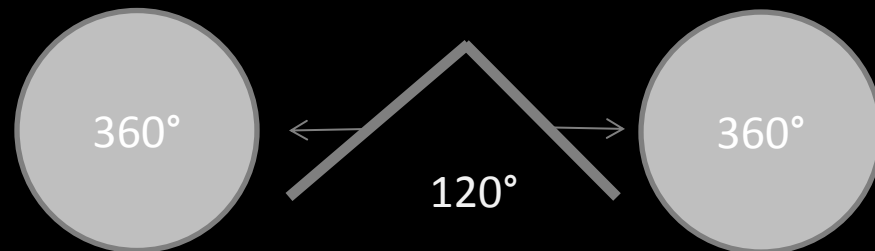
Sunset - 1h



SUN
FROM THE
BACK

Sunrise + 1h

Sunset - 1h



NO SKY
NO WATER
SOFTBOX



Wild Photography Moments

By Christian Sperka

































My Position on the Car



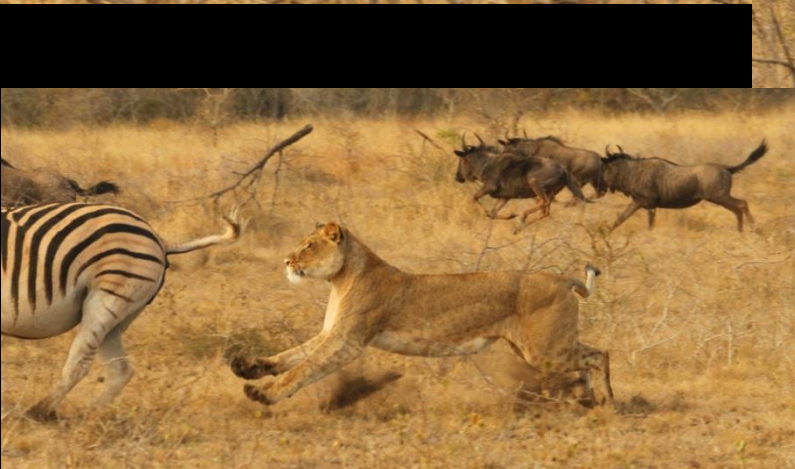
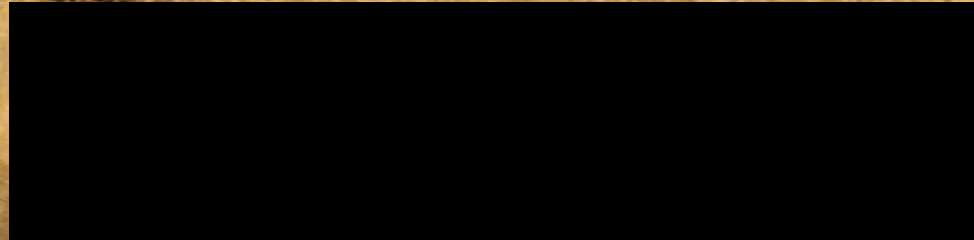








































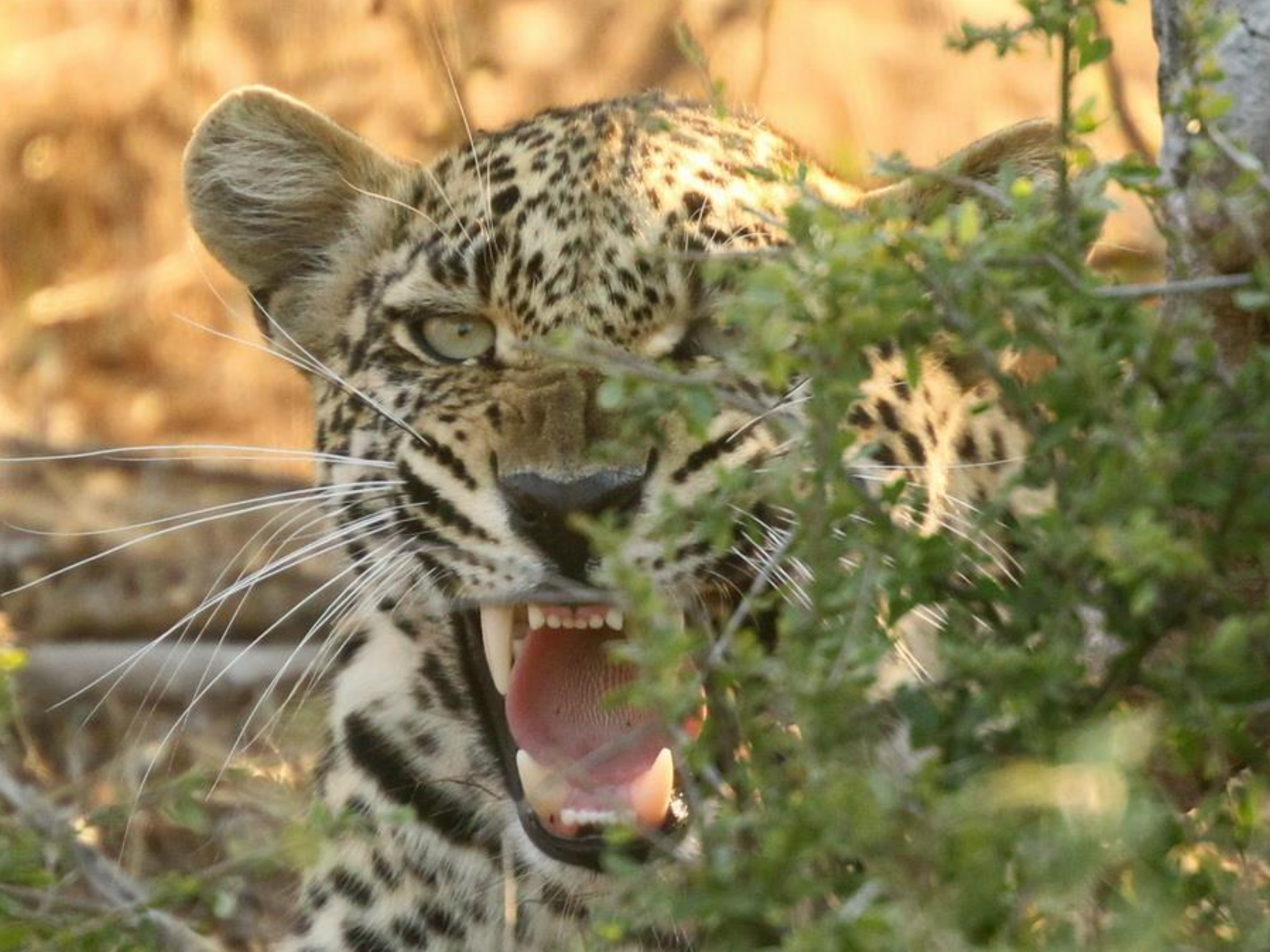


















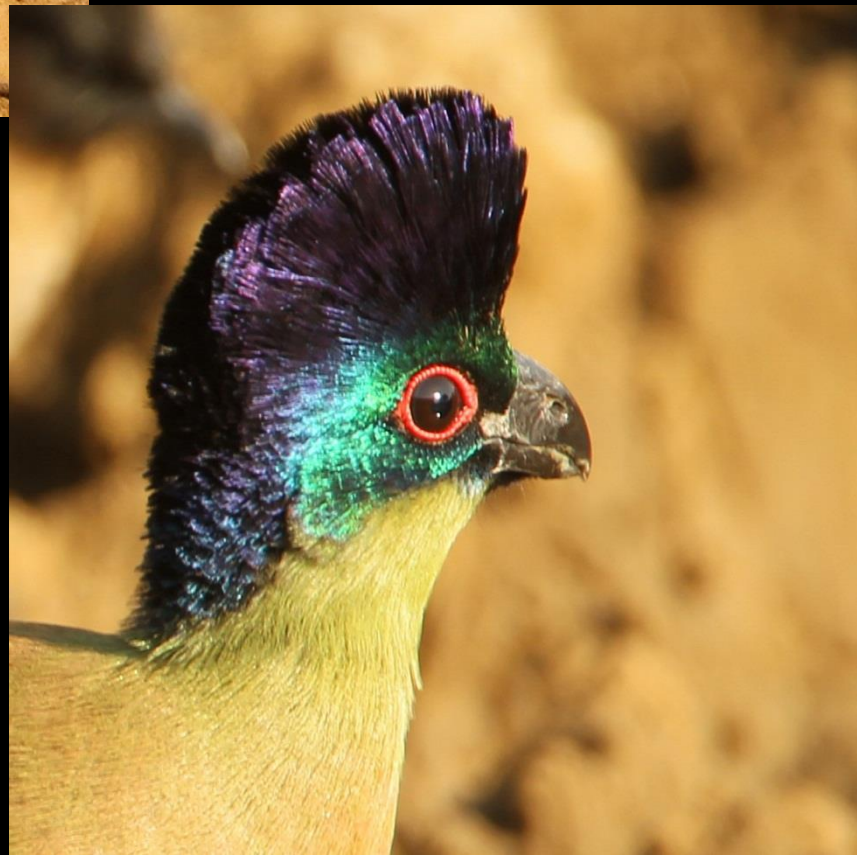






































Website - www.sperka.com

Facebook – Christian Sperka Photography

Web-Gallery - www.sperka.biz

Twitter - www.twitter.com/@christiansperka

Christian Sperka Photography Blog - [**www.sperka.info**](http://www.sperka.info)

